

Invisalign® clear aligners can help all kinds of smiles.



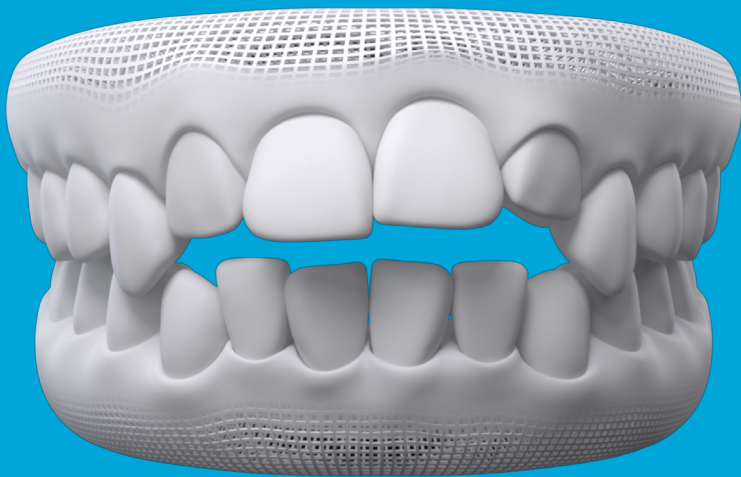
Crowded

Not enough space for the teeth to fit.



Gapped

Excessive gaps between the teeth.



Openbite

Upper and lower teeth do not overlap.



Underbite

Upper front teeth behind the lower teeth.



Crossbite

Some upper teeth behind the lower teeth.



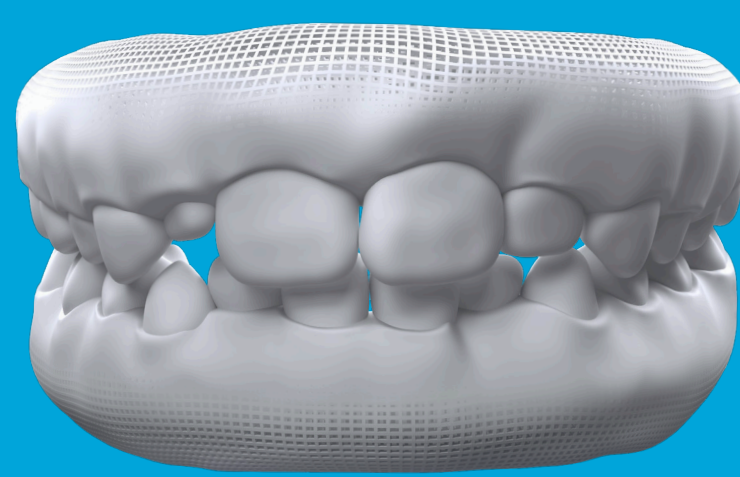
Overbite

Upper front teeth overlap and hide the lower teeth.



General alignment

Some teeth have the potential to be straighter.



Baby and permanent teeth

Not enough space for permanent teeth to come in safely.

Talk to your doctor and find out if Invisalign treatment is right for you.